



# OBM AGM Presentation

Luke Creagh  
Managing Director

23 November 2022



# Forward Looking Statements



## IMPORTANT NOTICE AND DISCLAIMER

This Presentation contains summary information about the Company and its activities which is current as at the date of this Presentation. The information in this Presentation is of a general nature and does not purport to be complete nor does it contain all the information which a prospective investor may require in evaluating a possible investment in the Company or that would be required in a prospectus or product disclosure statement prepared in accordance with the requirements of the Corporations Act.

The historical information in this Presentation is, or is based upon, information that has been released to the Australian Securities Exchange (ASX). This Presentation should be read in conjunction with the Company's other periodic and continuous disclosure announcements lodged with the ASX, which are available at [www.asx.com.au](http://www.asx.com.au).

## Forward-looking Statements and Forecasts

This Presentation contains certain "forward-looking statements" and comments about future matters. Forward-looking statements can generally be identified by the use of forward-looking words such as, "expect", "anticipate", "likely", "intend", "should", "could", "may", "predict", "plan", "propose", "will", "believe", "forecast", "estimate", "target", "outlook", "guidance" and other similar expressions within the meaning of securities laws of applicable jurisdictions. Indications of, and guidance or outlook on, future earnings or financial position or performance are also forward-looking statements. You are cautioned not to place undue reliance on forward-looking statements. Any such statements, opinions and estimates in this Presentation speak only as of the date hereof and are based on assumptions and contingencies subject to change without notice, as are statements about market and industry trends, projections, guidance and estimates. Forward-looking statements are provided as a general guide only. The forward-looking statements contained in this Presentation are not indications, guarantees or predictions of future performance and involve known and unknown risks and uncertainties and other factors, many of which are beyond the control of the Company, and may involve significant elements of subjective judgement and assumptions as to future events which may or may not be correct.

There can be no assurance that actual outcomes will not differ materially from these forward-looking statements. A number of important factors could cause actual results or performance to differ materially from the forward-looking statements. The forward-looking statements are based on information available to the Company as at the date of this Presentation.

Except as required by law or regulation (including the ASX Listing Rules), the Company undertakes no obligation to supplement, revise or update forward-looking statements or to publish prospective financial information in the future, regardless of whether new information, future events or results or other factors affect the information contained in this Presentation.

Not financial product advice: This presentation is not financial product, investment advice or a recommendation to acquire the Company securities and has been prepared without taking into account the objectives, financial situation or needs of individuals. Before making an investment decision prospective investors should consider the appropriateness of the information having regard to their own objectives, financial situation and needs, and seek legal, taxation and financial advice appropriate to their jurisdiction and circumstances. The Company is not licensed to provide financial product advice in respect of its securities or any other financial products. Cooling off rights do not apply to the acquisition of the Company securities. The Company assumes that the recipient is capable of making its own independent assessment, without reliance on this document, of the information and any potential investment and will conduct its own investigation.

## Disclaimer

The Company and its related bodies corporate and each of their respective directors, agents, officers, employees and advisers expressly disclaim, to the maximum extent permitted by law, all liabilities (however caused, including negligence) in respect of, make no representations regarding, and take no responsibility for, any part of this presentation and make no representation or

warranty as to the currency, accuracy, reliability or completeness of any information, statements, opinions, conclusions or representations contained in this presentation. In particular, this presentation does not constitute, and shall not be relied upon as, a promise, representation, warranty or guarantee as to the past, present or the future performance of the Company.

# Competent Persons Statements



## COMPETENT PERSONS STATEMENT

The information in this report that relates to Exploration Results is based on information compiled under the supervision of Mr Andrew Czerw, an employee of Ora Banda Mining Limited, who is Member of the Australian Institute of Mining and Metallurgy. Mr Czerw has sufficient experience which is relevant to the style of mineralisation and type of deposit under consideration and to the activity which he is undertaking to qualify as a Competent Person as defined in the 2012 Edition of the 'Australasian Code for Reporting of Exploration Results, Mineral Resources and Ore Reserves'. Mr Czerw consents to the inclusion in the report of the matters based on his information in the form and context in which it appears.

The information in this announcement that relates to the Riverina, Riverina South, British Lion, Waihi, Golden Eagle, Callion, Sand King and Missouri Mineral Resources is based on information compiled under the supervision of Mr Ross Whittle-Herbert, an employee of Ora Banda Mining Limited, who is Member of the Australian Institute of Geoscientists. Mr Whittle-Herbert has sufficient experience which is relevant to the style of mineralisation and type of deposit under consideration and to the activity which he is undertaking to qualify as a Competent Person as defined in the 2012 Edition of the 'Australasian Code for Reporting of Exploration Results, Mineral Resources and Ore Reserves'. Mr Whittle-Herbert consents to the inclusion in the report of the matters based on his information in the form and context in which it appears.

Sand King, Missouri, Riverina, Riverina South, British Lion, Waihi, Golden Eagle and Callion Mineral Resources are reported in accordance with the JORC 2012 code. The Company confirms that it is not aware of any new information or data that materially affects the information included in the original market announcements dated 15 December 2016 (Missouri) and 3 January 2017 (Sand King), 2 December 2019 (Riverina), 4 February 2020 (Waihi), 8 April 2020 (Golden Eagle), 15 May 2020 (Callion) and restated in market announcement "Davyhurst Gold Project - Ore Reserve Update" dated 26 May 2020.

Mineral Resources other than Sand King, Missouri, Riverina, Riverina South, British Lion, Waihi, Golden Eagle and Callion were first reported in accordance with the JORC 2004 code in Swan Gold Mining Limited Prospectus released to the market on 13 February 2013. Mineral Resources other than Sand King, Missouri, Riverina, Riverina South, British Lion, Waihi, Golden Eagle and Callion have not been updated to comply with JORC Code 2012 on the basis that the information has not materially changed since it was first reported.

# Corporate Overview

## Capital Structure

Share Price <sup>1</sup>	A\$/share	0.083
Shares on issue <sup>2</sup>	M	1,374
Options & performance rights on issue <sup>2</sup>	M	54.2
<b>Market Capitalisation<sup>1</sup></b>	<b>A\$M</b>	<b>114.0</b>
Cash & bullion <sup>2</sup>	A\$M	20.4
Debt <sup>2</sup>	A\$M	-
<b>Enterprise Value</b>	<b>A\$M</b>	<b>93.6</b>

- *Supportive major shareholder in Hawke's Point*
- *~50% owned by Institutions<sup>2</sup>*

1. As of market close on 21 November 2022
2. As of 30 September 2022
3. Commenced 4 July 2022
4. Commenced 30 September 2022

## Board of Directors

Peter Mansell	Non-executive Chairman (Corporate Lawyer)
Luke Creagh <sup>3</sup>	Managing Director (Mining Engineer)
Alan Rule <sup>4</sup>	Non-executive Director (Chartered Accountant)

## Management

Tony Brazier	Chief Financial Officer (Chartered Accountant)
Andrew Czerw	General Manager – Resource Development (Geologist)
Simon Hillyard	General Manager Operations (Geologist)

# Project Overview

OBM Davyhurst tenements are located ~100km north-west of Kalgoorlie and are centred on the following key project hubs:

- Siberia & Davyhurst
- Riverina & Mulline
- Callion & Lady Ida

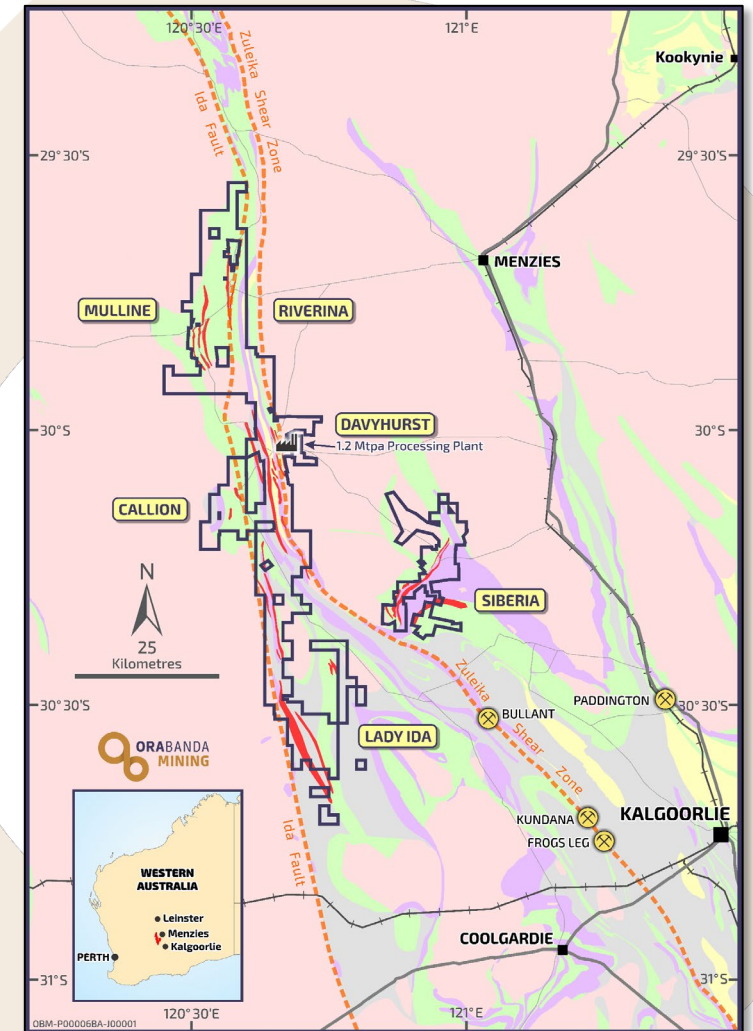
In total these projects hubs include:

- ~1,200 square kilometre land holding over 130km
- >120km combined strike of defined mineralised trends
- 92 granted tenements
- Historical production ~1.4Moz Au since 1897<sup>1</sup>
- Current Resource base of 2.0Moz at an average grade of 2.5g/t<sup>2</sup>
- Centrally located processing plant of 1.2Mtpa at Davyhurst

The tenement package is highly prospective; the central Davyhurst area covers the convergence of two regional significant deep-seated structures, the Zuleika Shear and the Mt Ida Fault

Davyhurst produced 61koz in FY22 but had numerous operational issues affecting overall performance

**The outstanding potential of this belt has been overshadowed by the operational underperformance - however, the value proposition remains**



<sup>1</sup> Historical production figures sourced from internal Company Records (updated from Monarch Gold 2008)

<sup>2</sup> See Appendix 1 and for further details ASX Announcement dated 1 August 2022

# Value Creation – OBM’s Three Year Strategy

## Short Term

### Focus on the fundamentals

- Improve mining operating capability to deliver performance as planned
- Achieve processing nameplate of 1.2Mtpa
- Review mine plans to maximise value
- Cost reduction initiatives resourced and pursued with intent
- Gold price used for Reserve calculations reduced from \$2,200/oz to \$1,850/oz – adds value to Reserve base and increases focus on higher-margin ounces
- Generate free cashflow to fund organic opportunities
- Over \$10M committed to Resource Definition and Exploration – including focus on higher-grade underground targets

## Medium Term

### Leverage organic opportunities

- Continuous improvement in operations to increase production & lower unit costs → increase in margin & cashflow
- Improve performance metrics; leverage off existing infrastructure and achieve above 1.2Mtpa nameplate capacity
- Lower unit costs increases the value of every Resource ounce, including higher conversion to Reserve → longer mine lives off existing resources
- Increase investment into exploration activities
- Identify higher grade ore sources and progress to mine plan

## Longer Term

### Performance drives growth

- Bring higher-margin mines online
- Cashflow supports infrastructure expansions; this will further enhance project economics and margins
- Ability to bring on large, high-margin open pits
- Free cashflow continues investment in exploration to also test high-grade mineralisation at depth

**Sustainable Performance - Guided by our Values; Delivered by our People**

# Values – How We Operate

## New Values

### We target Zero Harm

- Safety imbedded in all that we do
- Risks assessed and actively managed
- Sustainable environmental performance

### We are a Team with a Winning Mindset

- Plan to win - targets are known and achieved
- Every Person important to Team success
- Every Person accountable for their actions

### We Pursue Solutions with Intent

- Communication positive and respectful
- Empowered workforce that keeps improving
- Systems of work support high performance

### We Accept the Challenge to Create Value

- Develop our people to make a difference
- Achieve top 10% of industry performance
- Mediocrity is unacceptable



# FY23 Guidance & Actions to Improve

## Focus on the fundamentals

### FY23 Guidance

#### Overview

- Production of 56-61koz
- AISC of A\$2,175/oz - A\$2,275/oz
- ~\$6M of Exploration
- ~\$6M of Non-sustaining capital
- **Costs & production improves in H2** as Missouri strip ratio drops from 13:1 to 6:1 in March quarter; grade also improves at depth
- Processing blend of 1.2Mt is ~900kt at 1.9g/t from Missouri open pit, & ~300kt of 1.0g/t from stockpiles for an average feed grade of ~1.7g/t



#### Opportunities currently underway to improve on FY23 guidance

##### Mining

- Increase digger productivity rates → increases production profile, reduces unit cost, brings forward ounces into processing blend
- Increase ore quality (less dilution) → improve drill & blast practices; resources allocated to support production geology and digger operators

##### Processing

- Debottleneck crushing and grinding circuits
- Additional automation to increase utilisation and reduce waste
- Training and standardisation of operating and maintenance practices to increase throughput and reduce downtime

##### Cost Management

- Reviewing systems of work to streamline and improve economies of scale
- Reviewing capital investment vs operating spend to lower overall spend
- Working with our business partners to better share risk and remove duplication



# Geology First – Our New Approach

## Geology First

### Lessons from the past

- Tenement package was consolidated between 2006 to 2008; **OBM considers the true value of this consolidation is yet to be realised**
- Since the 1980s the focus has been on **open pit production**, with **limited focus on exploration or pursuing underground opportunities** – **OBM to date has not yet advanced these opportunities**
- Defined mineralised trends have been traced **for more than 120km** and much of this has had **no follow up drilling below 50m from surface**
- **Geological modelling and operational execution metrics not properly aligned**

### Our new approach

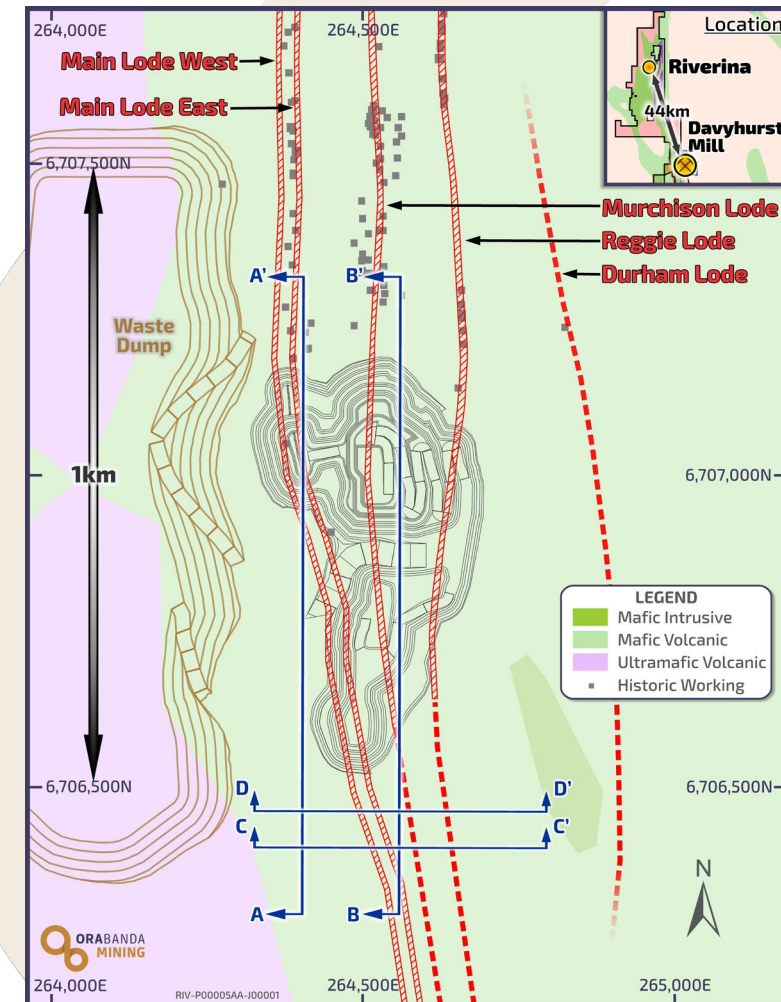
- **FY23 committed >\$10M of resource development and exploration drilling**
- Increased focus on **“boots-on-ground” geology with an emphasis on the structural mapping** of our key deposits **Siberia, Riverina and Callion** to better understand mineralisation controls is already paying dividends
- This **structural mapping will also assist with drill targeting** to ensure effective drill campaigns
  - Exploration and Resource extension **drilling commenced at Riverina** in July 2022
  - Exploration and Resource extension will commence at **Siberia** in December quarter
  - Exploration and Resource extension drilling to commence at **Callion** in March quarter
- **Alignment with geological modelling process & operational performance – this will be continuously refined and updated**



# Riverina – First Exploration Priority



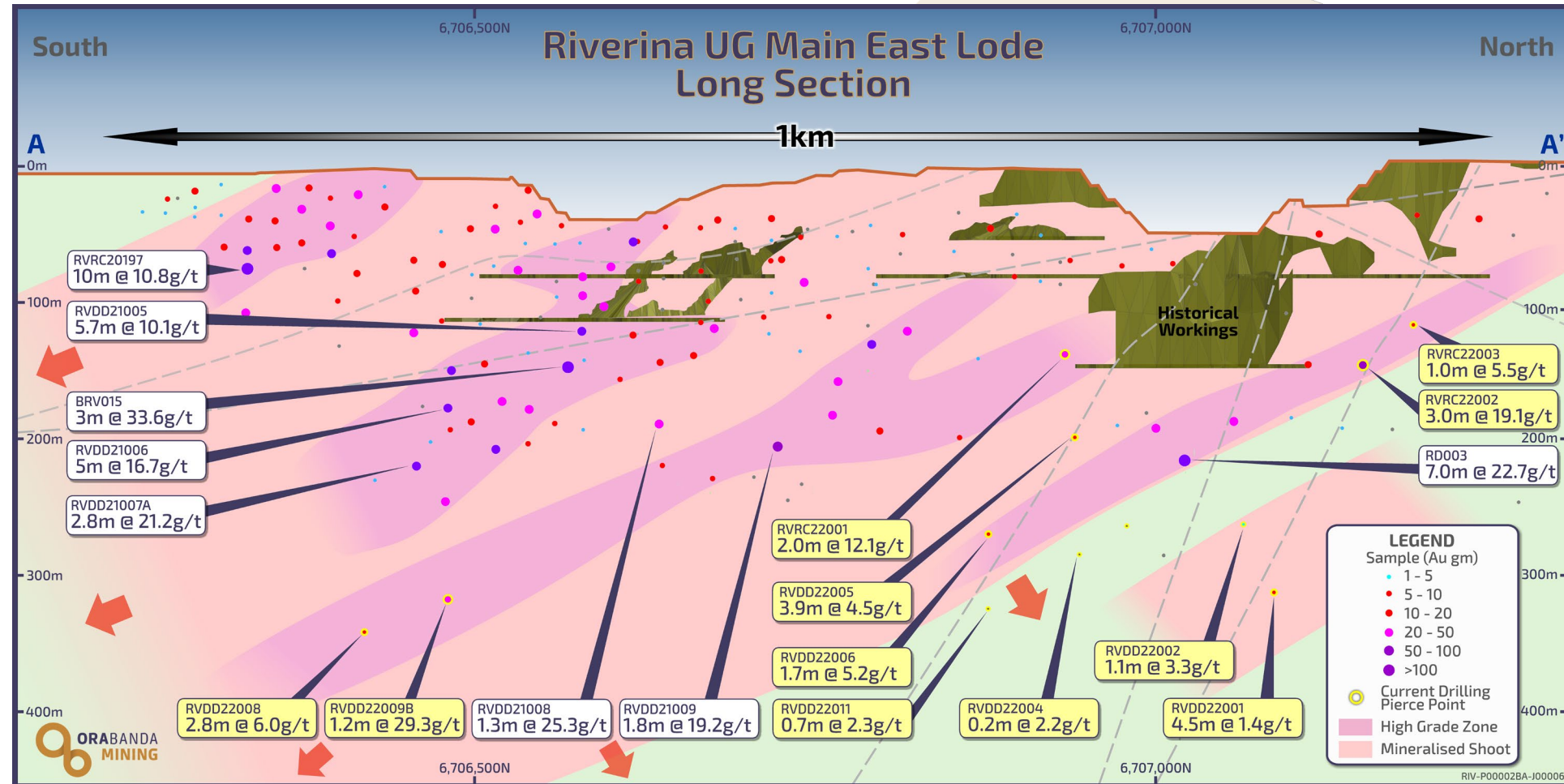
- A key pillar of OBM's 3-Year Strategy to create value is committing to exploration drilling, targeting high-grade underground ore for the potential to increase production above 100kozpa
- OBM's boots-on-the-ground and first principles approach to geology (with a key focus on structural mapping & modelling) indicated further potential at Riverina with mineralisation at the project open
- OBM started drilling underground extensions at Riverina in August 2022 as first priority considering:
  - Project has an existing high-grade underground resource of 150koz at 6.6gpt<sup>1</sup>
  - Historical mining down to ~120m extracted 100kt at ~12gpt - this was only on Main Lode East<sup>2</sup>
  - Developing the Riverina Underground is considered relatively quick and will have a low capex given existing infrastructure in the area and the ability to develop a mine portal from the open pit
  - Riverina ore has been processed at the Davyhurst mill and has recoveries of ~92%
  - There has been very little drilling in the overall system which is open in all directions and has had no drilling below 250m
- Program currently underway is the first diamond drill exploration program in more than 12 months on the tenement package
- Phase 1 drilling at Riverina will consist of 30 holes of which currently 12 have now been completed; total program to be completed by end of December



<sup>1</sup> The Company's Mineral Resources and Ore Reserves Statement as at 30 June 2022 was announced to the ASX on 01 August 2022. The Company is not aware of any new information or data which materially affects the information included in that announcement and, for the estimate of mineral resources, all material assumptions and technical parameters underpinning the estimate continue to apply and have not materially changed. See Appendix 1 for further detail. <sup>2</sup> Source - Historical Production figures sourced from internal Company records (Monarch Gold 2008)

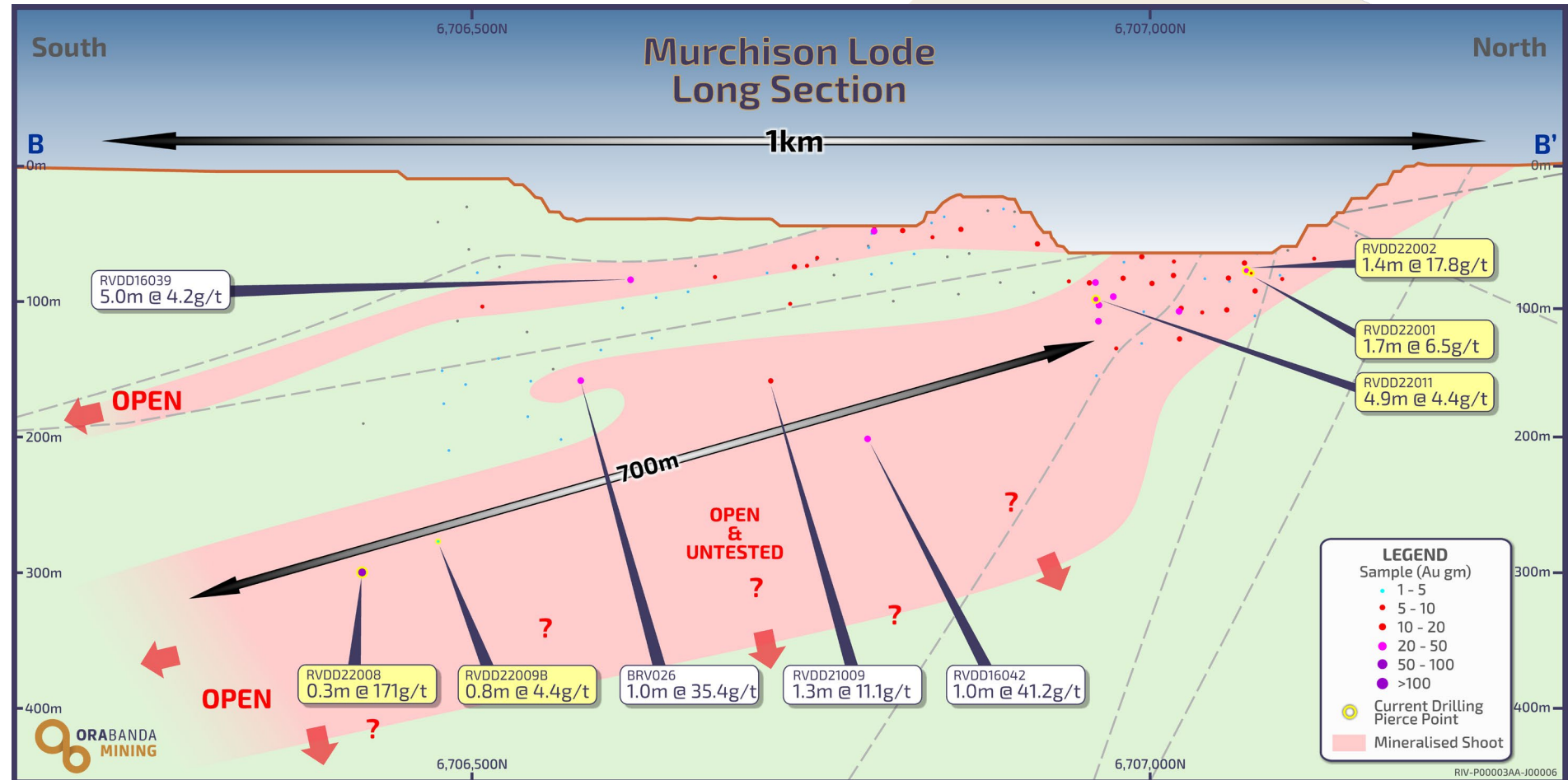
# Riverina Underground – Main Lode East

- Main Lodes are made up of two parallel structures (East and West) that are sub-vertical and ~10m apart; the Main Lode East is the prominent structure
- Extensional drilling under the Riverina open pit has extended the Main Lode an additional 100m vertically with high grade intercepts of 1.2m @ 29.9 g/t and 2.8m @ 6.0 g/t
- Continuity of the Main Lode structure has been proven for more than 1km and demonstrated that the system is open in all directions including high grade intercepts at depth

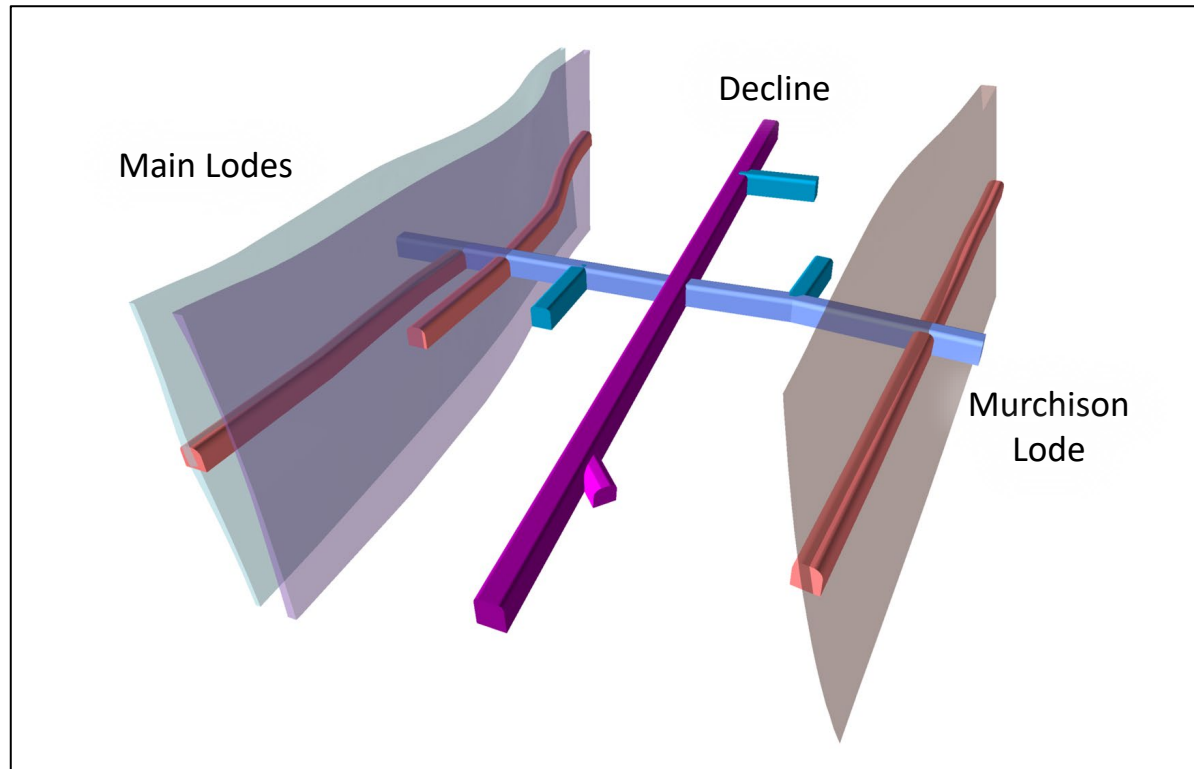


# Riverina Underground – Murchison Lode

- Narrow vein & high-grade extension of the Murchison Lode has been identified in deeper drilling that runs parallel to the existing Main Lode
- Murchison Lode is located ~80m east of Main Lode and is presenting as an attractive, high-grade, narrow vein underground mining target
- Lode system was not targeted in historic drilling as previous drilling in this area was shallow and largely from the West; therefore there were no deeper intersections
- Exploration window in this lode is extensive, with the structure intercepted over a 700m strike length with the deepest hole of 0.3m @ 171gpt



# Riverina – Ideal geometry for low capital and selective mining



Conceptual design demonstrating parallel lodes accessed from one centralised decline

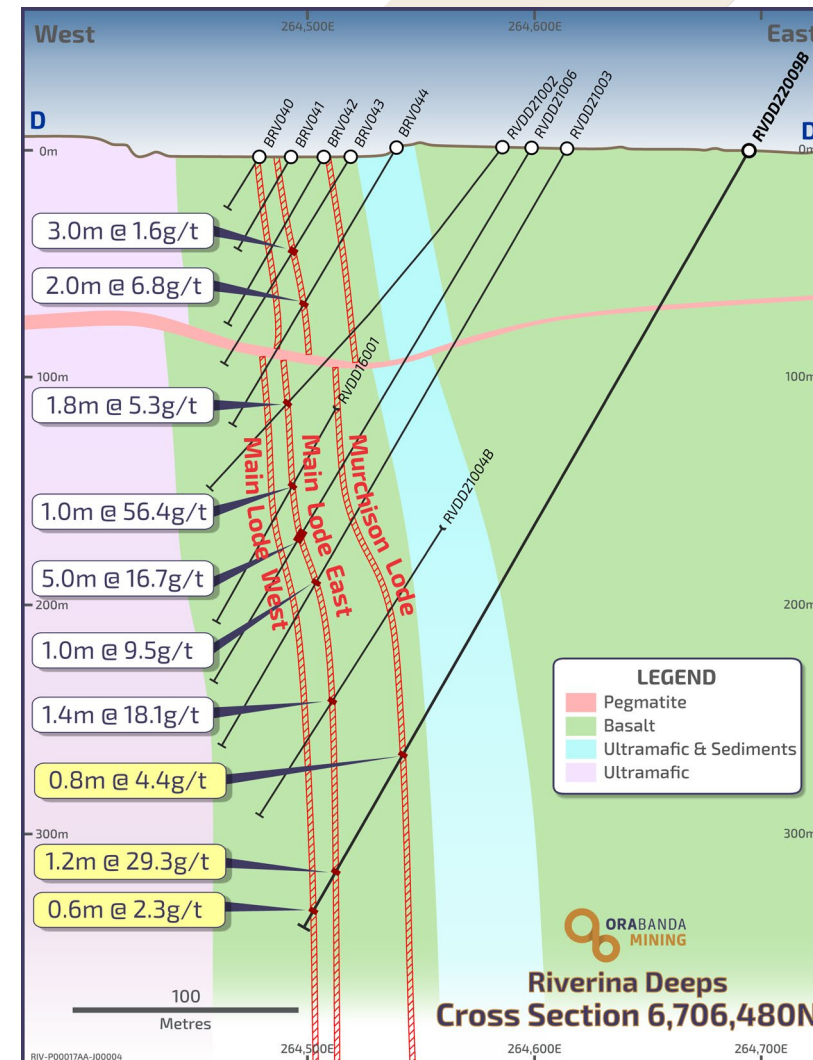
## Benefits of central decline and parallel lodes

- Identifying high-grade extensions of the Murchison Lodes could have substantial benefit to the economics of the Riverina Underground
- Single decline and infrastructure can access both lodes at the same time, improving equipment efficiency and increase production rates
- Grade control drilling can be done from stockpiles as the decline advances which allows for fast and accurate geological data and the ability to identify high-grade trends
- Access drives off the decline can easily be optimised to ensure they are targeting the highest grade ore, such that waste development is minimised
- Additional extraction sequencing and options will increase ability to mine to consistent grade

# Riverina – Exciting times ahead

## Just starting to unlock the deposit

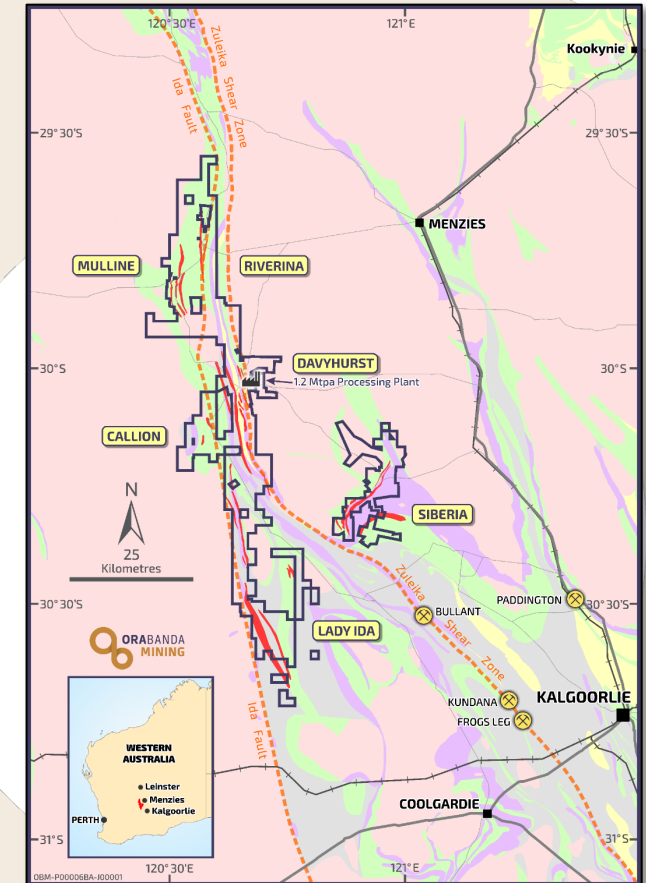
- Whilst it is still early days, this mineralised system is considered bigger than first thought and in parts it will host very high grade gold
- Continuing width and tenor of the Main Lode at depth and the discovery of the high-grade extension of the Murchison Lode demonstrates that there is substantial opportunity for further growth
- This is significant because it now means that OBM can realistically consider starting an underground operation at Riverina which can exploit multi-lode resources simultaneously and increase the grade profile to the Davyhurst plant to allow increasing our current production profile
- Currently there are two drill rigs operating at Riverina until the end of December, with a Resource update scheduled for the March quarter



# Exploration Opportunities

## Exploration potential is outstanding

- The tenement package is highly prospective; the central Davyhurst area covers the convergence of two regional significant deep-seated structures, the Zuleika Shear and Mt Ida Fault
- Very little exploration spend over last 25 years; no testing of targets at depth
- A large number of prospects and targets across the 6 main project areas with >120km of defined mineralised trends over 1,200 square kilometre land holding including
  - *Siberia Trend – 16km of anomalous gold following the regional UM contact*
  - *Riverina Trend – Includes UG mine, Greater Pacific & Sunraysia trend*
  - *Greater Callion Area – A high grade target area*
  - *Mulline Trend - +10km of highly anomalous gold mineralisation*
  - *Davyhurst Area - including Lights of Israel (LOI) and Waihi*
  - *Lady Ida – Iguana and Lizard*
- Developing our exploration pipeline requires a systematic, disciplined and continuous approach to exploration both with on-ground geology and focussed drill programs
- This persistent exploration effort will deliver organic growth opportunities for the business to support short, medium and long-term growth



# Infrastructure Well Established

## Infrastructure replacement cost of ~\$180M<sup>1</sup>

- **1.2Mtpa processing plant** (~\$120M replacement)
  - 3 stage crushing circuit
  - Twin 1.3MW ball mills
  - Gravity + CIL circuit
  - Thickener & tailings facility
  - Onsite assay lab
- **220 room camp** (~\$20M replacement)
- **Support infrastructure** (~\$40M replacement)
  - 7.5MW gas power station with diesel backup
  - Connection to mains power
  - Bore fields and pipeline
  - Airstrip and haul roads
  - Workshops, core shed and administration buildings



<sup>1</sup> Company estimate based on current publicly available market rates for similar infrastructure



# Performance Will Deliver Substantial Value



OBM's underlying value has been overshadowed by operational underperformance; actions in place to rectify

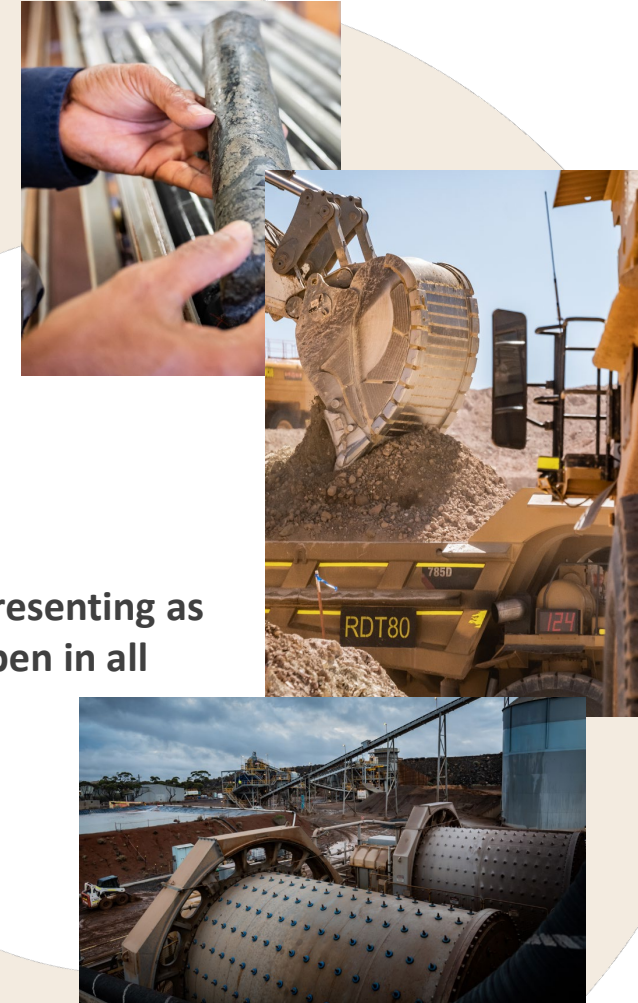
## FY23 Guidance

- **Production of 56-61koz**; improving in H2 as Missouri drops from 13:1 strip ratio to 6:1 strip ratio
- AISC of \$2,175/oz - \$2,275/oz; **actions to reduce cost and improve productivities** are underway
- ~\$6M of Exploration; **outstanding tenement package with highly prospective project pipeline**
- ~\$6M of Growth Capital; **organic growth opportunities funded from cashflow**

A key catalyst for value creation is to bring high grade underground mines online – Riverina is presenting as a big system with numerous high grade intersections, that is substantially underexplored and open in all directions

Guided by our values – we are a team with a winning mindset, we pursue solutions with intent and we accept the challenge to create sustainable value

... and we are just getting started





Thank you



# Appendix 1

Mineral Resource Table

PROJECT	Cut Off	MEASURED		INDICATED		INFERRED		TOTAL MATERIAL			
		('000t)	(g/t Au)	('000t)	(g/t Au)	('000t)	(g/t Au)	('000t)	(g/t Au)	('000oz.)	
GOLDEN EAGLE	2.0	63	3.8	215	3.2	206	3.1	484	3.3	51	
LIGHTS OF ISRAEL	3.0	-	-	74	4.3	180	4.2	254	4.2	34	
MAKAI SHOOT	1.0	-	-	1,985	2.0	153	1.7	2,138	2.0	136	
WAIHI	Open Pit	0.5	-	1,948	2.4	131	2.9	2,079	2.4	159	
	Underground	2.0	-	188	3.7	195	4.0	383	3.8	47	
TOTAL		-	-	2,136	2.5	326	3.5	2,462	2.6	206	
<b>Central Davyhurst Subtotal</b>		-	-	<b>4,410</b>	<b>2.3</b>	<b>865</b>	<b>3.2</b>	<b>5,338</b>	<b>2.5</b>	<b>427</b>	
LADY GLADYS	1.0	-	-	1,858	1.9	190	2.4	2,048	1.9	128	
RIVERINA AREA	Open Pit	0.5	599	1.5	2,120	1.6	110	1.6	2,829	1.6	141
	Underground	2.0	-	-	351	6.7	361	6.5	712	6.6	151
TOTAL		599	1.5	2,471	2.3	471	5.3	3,541	2.6	292	
BRITISH LION	Open Pit	0.5	-	-	386	1.6	17	1.6	403	1.6	21
	Underground	2.0	-	-	36	3.2	3	3.8	39	3.2	4
TOTAL		-	-	422	1.7	20	2.0	442	1.7	25	
FOREHAND	Open Pit	0.5	-	-	-	-	691	1.5	691	1.5	33
	Underground	2.0	-	-	-	-	153	2.5	153	2.5	12
TOTAL		-	-	-	-	-	844	1.7	844	1.7	46
SILVER TONGUE	Open Pit	0.5	-	-	-	-	127	2.3	127	2.3	9
	Underground	2.0	-	-	-	-	77	4.5	77	4.5	11
TOTAL		-	-	-	-	-	204	3.1	204	3.1	21
SUNRAYSLA	1.0	-	-	175	2.1	318	2.0	493	2.0	32	
<b>Riverina-Mulline Subtotal</b>		<b>599</b>	<b>1.5</b>	<b>4,926</b>	<b>1.9</b>	<b>2,047</b>	<b>2.8</b>	<b>7,572</b>	<b>2.2</b>	<b>543</b>	
SAND KING	Open Pit	0.5	73	2.3	923	3.4	201	3.0	1,197	3.2	124
	Underground	2.0	-	-	408	3.5	586	3.4	994	3.4	110
TOTAL		73	2.3	1,331	3.4	787	3.3	2,191	3.3	235	
MISSOURI	Open Pit	0.5	-	-	980	3.3	50	2.9	1,030	3.2	107
	Underground	2.0	-	-	378	3.3	409	3.6	787	3.4	87
TOTAL		-	-	1,358	3.3	459	3.5	1,817	3.3	194	
PALMERSTON / CAMPERDOWN	1.0	-	-	118	2.3	174	2.4	292	2.4	23	
BLACK RABBIT	1.0	-	-	-	-	434	3.5	434	3.5	49	
<b>Siberia Subtotal</b>		-	-	<b>2,807</b>	<b>3.3</b>	<b>1,854</b>	<b>3.3</b>	<b>4,734</b>	<b>3.3</b>	<b>500</b>	
CALLION	Open Pit	0.5	-	-	241	3.7	28	1.6	269	3.5	30
	Underground	2.0	-	-	255	6.0	156	5.5	411	5.8	77
TOTAL		-	-	496	4.9	184	4.9	680	4.9	107	
<b>Callion Subtotal</b>		-	-	<b>496</b>	<b>4.9</b>	<b>184</b>	<b>4.9</b>	<b>680</b>	<b>4.9</b>	<b>107</b>	
FEDERAL FLAG	1.0	32	2	112	1.8	238	2.5	382	2.3	28	
SALMON GUMS	1.0	-	-	199	2.8	108	2.9	307	2.8	28	
WALHALLA	1.0	-	-	448	1.8	216	1.4	664	1.7	36	
WALHALLA NORTH	1.0	-	-	94	2.4	13	3.0	107	2.5	9	
MT BANJO	1.0	-	-	109	2.3	126	1.4	235	1.8	14	
MACEDON	1.0	-	-	-	-	186	1.8	186	1.8	11	
<b>Walhalla Subtotal</b>		<b>32</b>	<b>2.0</b>	<b>962</b>	<b>2.1</b>	<b>887</b>	<b>2.0</b>	<b>1,881</b>	<b>2.1</b>	<b>125</b>	
IGUANA	Open Pit	1.0	148	2	3,847	1.7	146	1.7	4,141	1.7	226
	Underground	2.0	-	-	357	3.5	314	2.7	671	3.1	68
TOTAL		-	-	4,204	1.8	460	2.4	4,812	1.9	294	
LIZARD	1.0	106	4	75	3.7	13	2.8	194	3.8	24	
<b>Lady Ida Subtotal</b>		<b>254</b>	<b>2.8</b>	<b>4,279</b>	<b>3.7</b>	<b>473</b>	<b>4.8</b>	<b>5,006</b>	<b>2.0</b>	<b>318</b>	
<b>Davyhurst Total</b>		<b>900</b>	<b>1.9</b>	<b>17,900</b>	<b>2.8</b>	<b>6,300</b>	<b>3.1</b>	<b>25,200</b>	<b>2.5</b>	<b>2,020</b>	

Ore Reserves Table

PROJECT AREA	DEPOSIT	PROVED		PROBABLE		TOTAL MATERIAL		
		('000t)	(g/t Au)	('000t)	(g/t Au)	('000t)	(g/t Au)	('000oz.)
Siberia	Missouri	-	-	1,090	2.2	1,090	2.2	78
	Sand King	10	2.4	400	2.2	410	2.2	29
Riverina	Riverina	80	1.9	10	1.9	90	1.9	5
Davyhurst	Waihi	-	-	340	2.3	340	2.3	24
Callion	Callion	-	-	140	3.0	140	3.0	13
Lady Ida	Iguana	100	2.0	1,800	1.7	1,910	1.7	107
<b>Sub-Total</b>		<b>190</b>	<b>2.0</b>	<b>3,860</b>	<b>2.0</b>	<b>3,970</b>	<b>2.0</b>	<b>257</b>
Stockpiles	Siberia / Riverina	610	1.0			610	1.0	19
<b>TOTAL</b>		<b>800</b>	<b>1.2</b>	<b>3,860</b>	<b>2.0</b>	<b>4,580</b>	<b>1.9</b>	<b>276</b>

- The Missouri, Sand King, Riverina, Waihi and Callion Mineral Resources have been updated in accordance with all relevant aspects of the JORC code 2012, and initially released to the market on 15 December 2016 & 26 May 2020 (Missouri), 3 January 2017 & 26 May 2020 (Sand King), 2 December 2019 & 26 May 2020 (Riverina), 4 February 2020 (Waihi) and 15 May 2020 & 29 June 2020 (Callion)
- Details on Iguana and Riverina Underground are included in this release.
- The Riverina, Waihi, Sand King, Missouri, Callion, and Iguana Open Pit Mineral Resource Estimates are reported within a A\$2,400/oz pit shell above 0.5g/t. Riverina, Waihi, Sand King, Missouri, Callion, and Iguana Underground Mineral Resource Estimates are reported from fresh material outside the A\$2,400 pit shell and above 2.0 g/t.
- Resources are inclusive of in-situ ore reserves and are exclusive of surface stockpiles.
- The values in the above table have been rounded.

## Resource Notes

- The Missouri, Sand King, Riverina Open pit, British Lion, Waihi, Callion, Golden Eagle, Forehand and Silver Tongue Mineral Resources have been updated in accordance with all relevant aspects of the JORC code 2012, and initially released to the market on 15 December 2016 & 26 May 2020 (Missouri), 3 January 2017 & 26 May 2020 (Sand King), 2 December 2019 & 26 May 2020 (Riverina), 4 February 2020 (Waihi), 15 May 2020 & 29 June 2020 (Callion), 8 April 2020 (Golden Eagle) and 9 October 2020 (Riverina South). Details on Iguana and Riverina Underground are included in this release
- All Mineral Resources listed above, with the exception of the Missouri, Sand King, Riverina, British Lion, Waihi, Callion, Golden Eagle, Forehand, Silver Tongue and Iguana Mineral Resources, were prepared previously and first disclosed under the JORC Code 2004 (refer Swan Gold Mining Limited Prospectus released to the market on 13 February 2013). These Mineral Resources have not been updated in accordance with JORC Code 2012 on the basis that the information has not materially changed since it was first reported.
- The Riverina Open Pit, British Lion, Waihi, Sand King, Missouri, Callion, Forehand, Silver Tongue and Iguana Open Pit Mineral Resource Estimates are reported within a A\$2,400/oz pit shell above 0.5g/t. The Riverina Underground, British Lion, Waihi, Sand King, Missouri, Callion, Forehand, Silver Tongue, Iguana and Golden Eagle Underground Mineral Resource Estimates are reported from material outside a A\$2,400 pit shell and above 2.0 g/t.
- Resources are inclusive of in-situ ore reserves and are exclusive of surface stockpiles
- The above table may contain rounding adjustments.

The Company's Mineral Resources and Ore Reserves Statement as at 30 June 2022 was announced to the ASX on 01 August 2022. The company is not aware of any new information or data which materially affects the information included in that announcement and, for the estimate of mineral resources, all material assumptions and technical parameters underpinning the estimate continue to apply and have not materially changed.